



## Athmer Finger Protection

- for child daycare centres, schools, retirement homes and hospitals
- for automatic doors
- for fire doors
- ideal for retrofitting

**Athmer - Experience | Competence | Innovation**



[www.tuv.com](http://www.tuv.com)  
ID 1111209885



# ATHMER

## The latest technology at the highest level

### **Effective prevention against fingers becoming trapped between the door leaf and the frame**

Athmer finger protection systems have been preventing injuries for thirty years by effectively reducing the risk of fingers becoming accidentally trapped in doors.

### **Finger protection at doors**

The closing edges of doors invariably present a hazard. The requirements for different user groups and structural factors are governed by regional regulations and standards.

### **Finger protection in child daycare centres and schools**

Children are scarcely aware of the dangers in their environment. Every day, children injure themselves unnecessarily in doors that are inadequately safeguarded or completely unprotected. In order to improve safety for our children, shearing zones between the door frame and the hinged edge of doors must be avoided. Several regulations in European countries require safeguarded doors in child daycare centers. Our Athmer Finger Protection products offer the ideal solution.

### **Finger protection for automatic doors**

Automatic doors must open and close in a safe manner (EN 16005) in order to ensure proper safety in use.

Possible crushing and shearing zone hazards must be identified and eliminated. The closing edge at the hinged edge of the door must be safeguarded in compliance with the regional regulations and standards.

We recommend that existing automatic doors also be fitted with Athmer Finger Protection products.

Please observe the provisions of the relevant regulations and standards that apply in your country with regard to automatic doors.



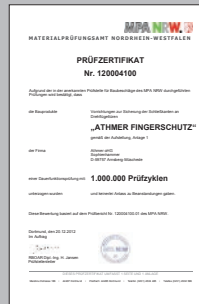
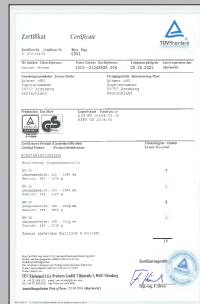
© Bild: Meier, P. Redfinger

## Athmer Finger Protection

for the hinge side on the closing face

- Reliably covers the gap between the door leaf and the door frame
- Maintenance free
- Easy to clean
- Supply package includes accessories
- Aluminium profiles
- Opening face protective profiles are suitable for complete finger protection at the closing edge
- Retrofittable
- Available in fixed and standard lengths
- Individual choice of colours

### Tested quality



www.tuv.com  
ID 1111209885

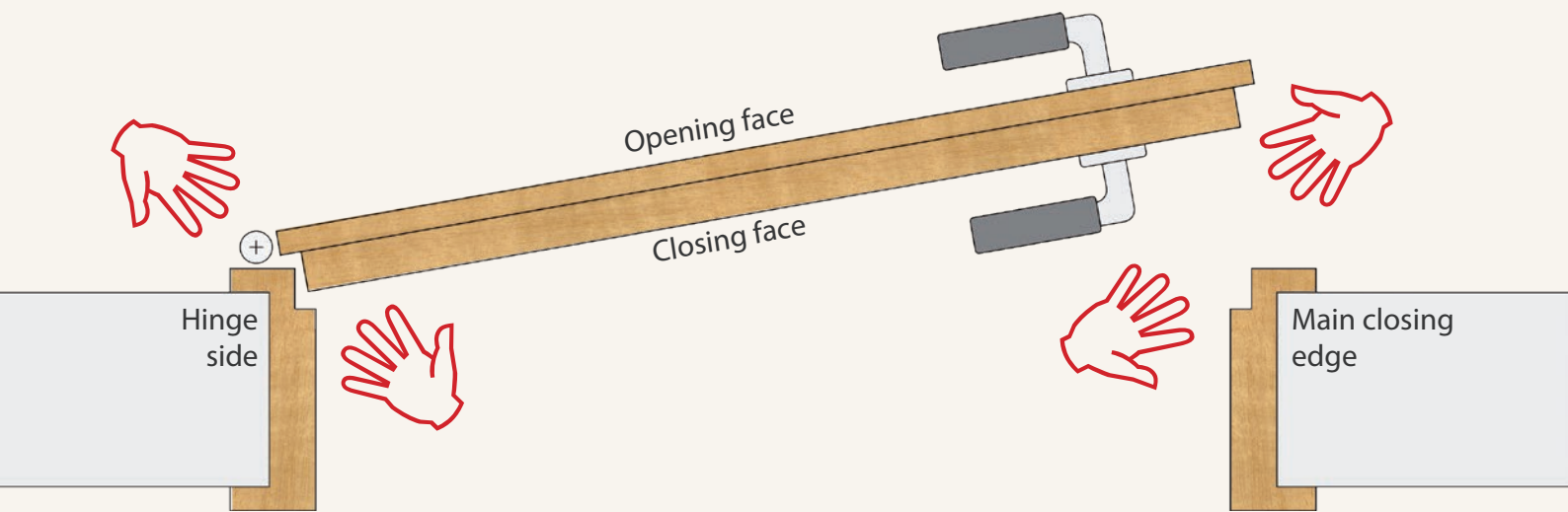
- Test certificates available upon request or online at:  
[www.athmer-fingerschutz.de/en](http://www.athmer-fingerschutz.de/en)



### Finger protection for fire doors

In general, Athmer finger protection systems are suitable for use with fire doors and smoke protection doors. The regulations that apply in your country with regard to fire protection doors must be observed and complied with when fitting finger protection systems.

Further information can be found at:  
[www.athmer.de/en](http://www.athmer.de/en)



<b>Athmer Finger Protection product range</b>	<b>Site</b>
<b>Athmer Finger Protection, Hinge side/closing face</b>	<b>6</b>
Finger Protection NR-32 UniSafe®   <b>NEW</b>	<b>7</b>
Finger Protection NR-26 w-proof	<b>9</b>
Finger Protection NR-30 / Fingerprotection NR-30 XL	<b>10</b>
Finger Protection NR-38 / Fingerprotection NR-38 XL	<b>11</b>
Finger Protection NR-25	<b>12</b>
Finger Protection NA-7	<b>13</b>
Examples of use	<b>14</b>
<b>Athmer Finger Protection, hinge side/opening face</b>	<b>16</b>
Protective Profiles BU-K, BU, BD <sup>+</sup> , BO	<b>18</b>
Protective Profiles BA for surface mounted hinges	<b>19</b>
Finger Protection for glass doors	<b>20</b>
Examples of use	<b>21</b>
<b>Main closing edge</b>	<b>22</b>
Fingerprotection HS-25	<b>23</b>
Finger Protection Swing GUARD	<b>24</b>
Door opening restrictor Porti	<b>27</b>



LESEN  
DIE W  
BUNT

Europäisches Schul- und Gemüseprogramm  
in Nordrhein-Westfalen  
Frische Früchte  
für unser junges Gemüse!

Drücken



www.tuv.com  
ID 1111209885

## NEW - NR-32 UniSafe® sets new standards

With the NR-32 UniSafe® Athmer has developed a new finger protection system which proves itself through unique design, more safety and many additional features.

### SAFETY in use

- Enhanced protection due to improved door gap cover and blunted profile edges  
With tamper-proof KLiCK system and robust housing

### One DESIGN for all applications

- Integration in existing inner architectures and door designs for continuous design throughout the building, for indoor and outdoor use

### KLiCK system for fast and secure installation/deinstallation

- Time-saving installation with only a few attachment points
- Easy replacement of damaged finger protection systems

### INSTALLATION IN COMMERCIAL PROJECTS in two stages

- Delivery and installation of the fixing rails and finger protection at time-shifted intervals prevents damage to the product during the construction phase

### ADAPTATION to panic fittings can easily be provided on site

- The carrier profile is equipped as standard for this purpose and can be easily inserted and disengaged from existing hardware systems, e.g. push bar, touch bar, ram protection bar, etc.

### RAM PROTECTION for demanding environments (e.g. hospitals, airports)

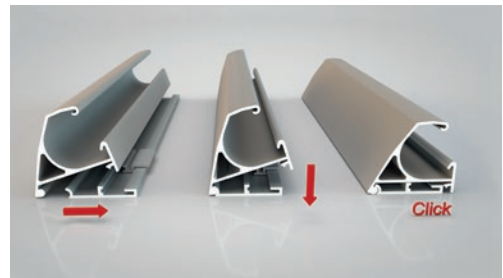
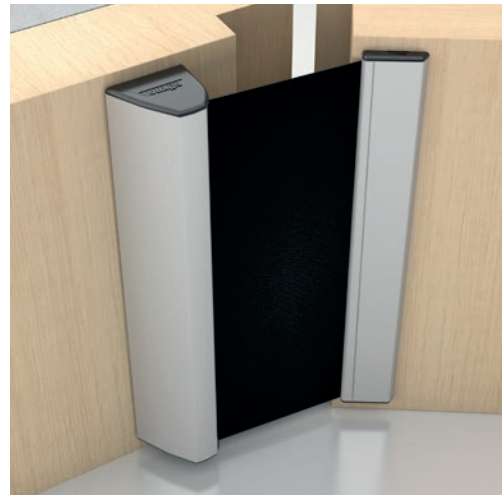
- Force-deflecting element as additional protection for the door and frame

### MAINTENANCE and CLEANING through simple unlocking

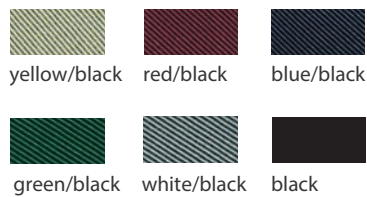
- Problem-free hinge maintenance, seal adjustment possible

## NR-32 UniSafe®

- Easy to install and dismantle
- One design for all applications
- KCLICK system with concealed screws
- Protective roller blind automatically maintains constant tension
- Flexible choice of colours
- Fabric made of fire-retardant synthetic fibre, black as standard
  
- Optional: **NR-32 UniSafe® XL** with 320 mm travel length for:
  - Fabric, black
  - Fabric, w-proof variant
- Optional: **Ram protection** in the lengths 500 mm, 960 mm, 1,923 mm

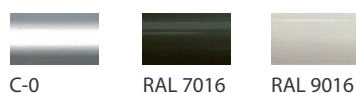


### Fabric colour



anthracite / w-proof in external use

### Standard profile colours without additional cost



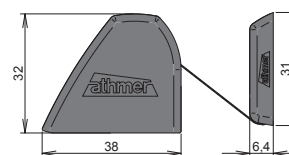
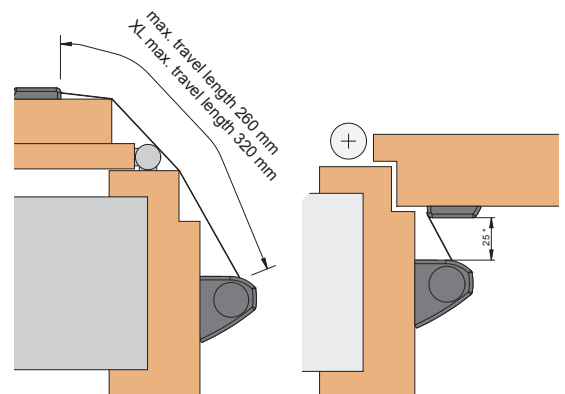
Further colours on request.

### Special profile colours



### Technical data

Reduction in door clearancewidth	32 mm
Max. Lengths	3,000 mm
Standard length*	1,925 mm / 2,050 mm
Length for power-operated doors**	2,000 mm / 2,500 mm
Minimum length	325 mm
Fixed lengths	Available
Can be shortened by	-



\* Length supplied for standard doors in accordance with DIN 18101 with BR2000. For doors with BR2125, we recommend that you order a length of 2,050 mm.

\*\*Optional multi-use drill with Ø 3 mm, art. no. 5127. The right to make technical changes is reserved athmer oHG | Stand 11.07.2018





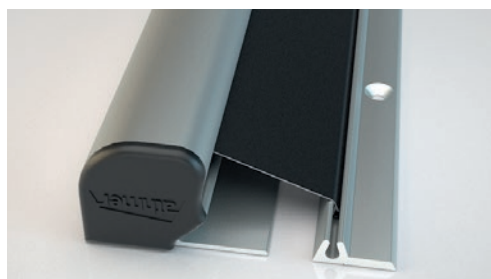
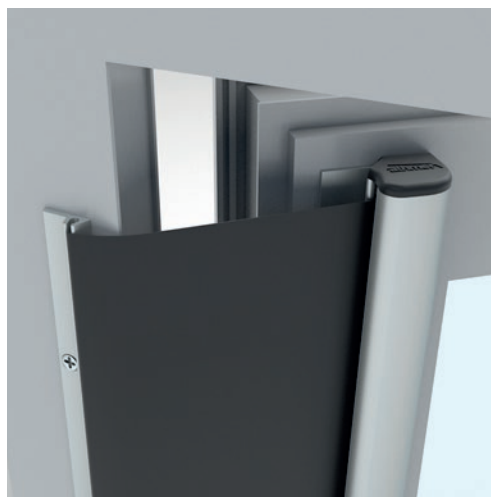


## NR-26 w-proof

- Protective roller blind automatically maintains constant tension
- Weatherproof
- Temperature range -20 to +50 °C
- Resistant to rain, snow, frost, foliage, dirt and UV light
- Extremely compact and robust design
- Concealed screws on the blind side
- Flexible choice of colours
- Fire retardant synthetic fibre cover

Verified long-term reliability 200,000

Travel length: 260 mm

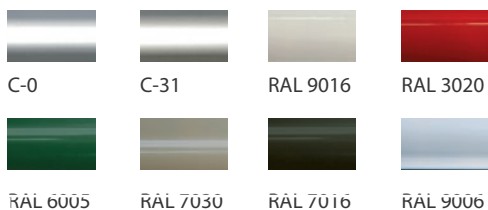


### Fabric colour



anthracite

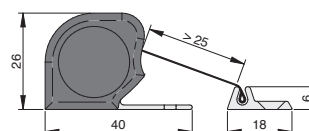
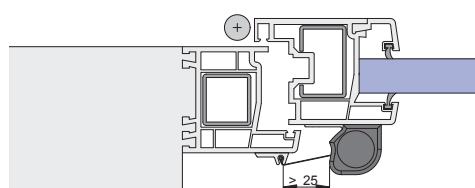
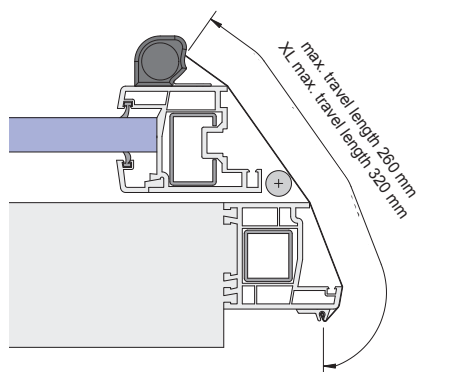
### Profile colour



Further colours on request.

### Technical data

Reduction in door clearancewidth	26 mm
Max. Lengths	2,500 mm
Standard length*	1,925 mm
Length for power-operated doors	2,015 mm
Minimum length	325 mm
Fixed lengths	Available
Can be shortened by	-
Standard accessories	5830
Accessories for wooden frames**	5831



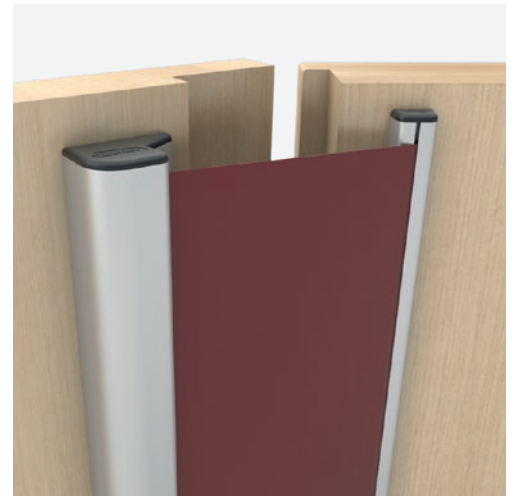
\* Length supplied for standard doors in accordance with DIN 18101 with BR2000. For doors with BR2125, we recommend that you order a length of 2,050 mm.

\*\*Optional multi-use drill with Ø 3 mm, art. no. 5127. The right to make technical changes is reserved athmer oHG | Stand 11.07.2018

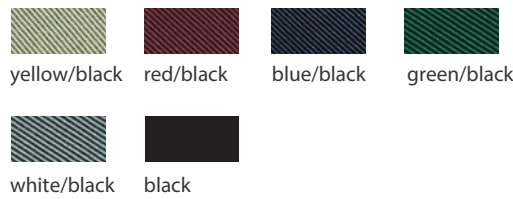


## NR-30

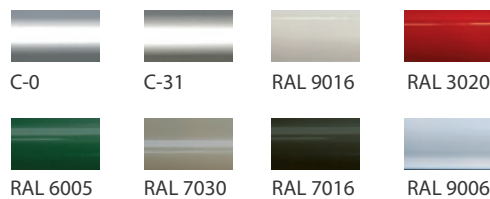
- Easy to install and dismantle
  - Protective roller blind automatically maintains constant tension
  - Innovative design
  - Flexible choice of colours
  - Concealed snap-on fastening
  - Fire retardant synthetic fibre cover
  - Optional: **NR-30 XL** with 320 mm travel length, black fabric
  - **NEW** TOOLBOX for fast and easy assembly
- Verified long-term reliability: 1,000,000  
Travel length: 260 mm



### Fabric colour



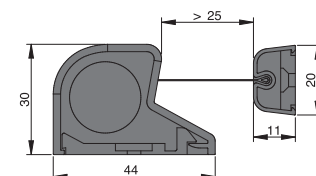
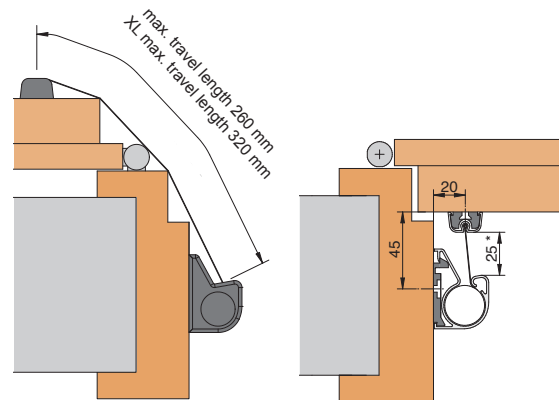
### Profile colour



Further colours on request.

### Technical data

Reduction in door clearancewidth	30 mm
Max. Lengths	2,500 mm
Standard length*	1,925 mm
Length for power-operated doors	2,015 mm
Minimum length	325 mm
Fixed lengths	Available
Can be shortened by	-
Standard accessories	5825
Accessories for metal door frames**	5125

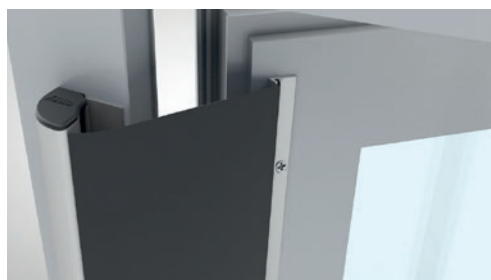


\* Length supplied for standard doors in accordance with DIN 18101 with BR2000. For doors with BR2125, we recommend that you order a length of 2,050 mm.  
\*\*Optional multi-use drill with Ø 3 mm, art. no. 5127. The right to make technical changes is reserved athmer oHG | Stand 11.07.2018



## NR-38

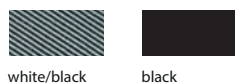
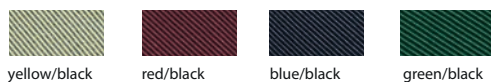
- Protective roller blind
  - automatically maintains constant tension
- Concealed screws on the blind side
- For mounting on wrap-around frames
  - with a reveal depth from 60 mm
- Ergonomic shape
- Fire retardant synthetic fibre cover
- Optional: **NR-38 XL** with 320 mm travel length, black fabric



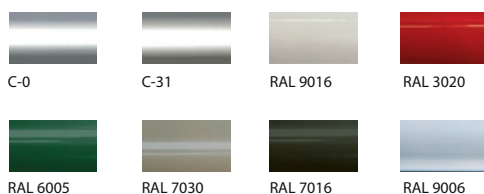
Verified long-term reliability: 1,000,000

Travel length: 260 mm

### Fabric colour



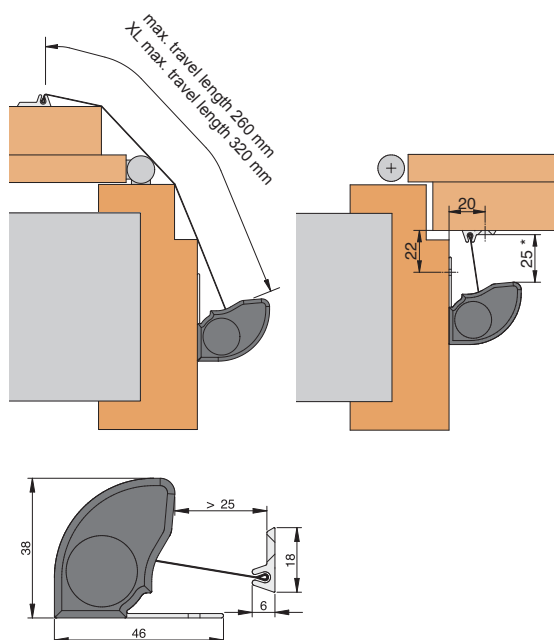
### Profile colour



Further colours on request.

### Technical data

Reduction in door clearancewidth	38 mm
Max. Lengths	2,500 mm
Standard length*	1,925 mm
Length for power-operated doors	2,015 mm
Minimum length	325 mm
Fixed lengths	Available
Can be shortened by	-
Standard accessories	5823
Accessories for metal door frames**	5125



\* Length supplied for standard doors in accordance with DIN 18101 with BR2000. For doors with BR2125, we recommend that you order a length of 2,050 mm.

\*\*Optional multi-use drill with Ø 3 mm, art. no. 5127. The right to make technical changes is reserved athmer oHG | Stand 11.07.2018



## NR-25

- Proven protective system for decades
- Compact form
- Optional version for fitting to glass doors
- Protective roller blind automatically maintains constant tension
- Fire retardant synthetic fibre cover



Verified long-term reliability: 1,000,000

Travel length: 260 mm

### Fabric colour



black

### Profile colour



C-0



C-31

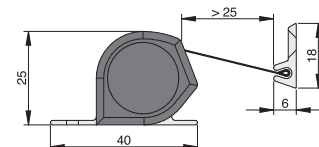
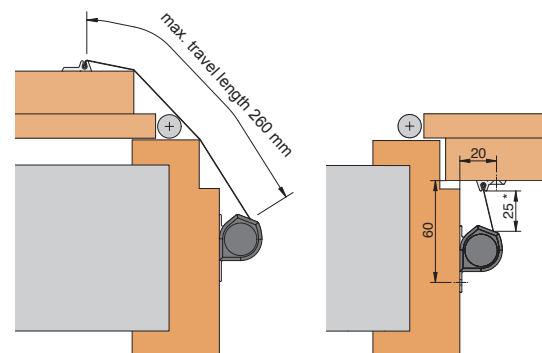


RAL 9016

Further colours on request.

### Technical data

Reduction in door clearancewidth	25 mm
Max. Lengths	2,500 mm
Standard length*	1,925 mm
Length for power-operated doors	2,015 mm
Minimum length	325 mm
Fixed lengths	Available
Can be shortened by	-
Standard accessories	5823
Accessories for metal door frames**	5125



\* Length supplied for standard doors in accordance with DIN 18101 with BR2000. For doors with BR2125, we recommend that you order a length of 2,050 mm.  
 \*\*Optional multi-use drill with Ø 3 mm, art. no. 5127. The right to make technical changes is reserved athmer oHG | Stand 11.07.2018



## NA-7

- Cover made of special plastic
- Particularly flat design
- Suitable for door leaf thicknesses up to 42 mm, a door opening restrictor can be used if required



Verified long-term reliability: 200,000

Travel length: 125 mm

### Cover colour



Platinum grey RAL 7036

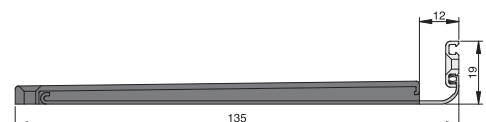
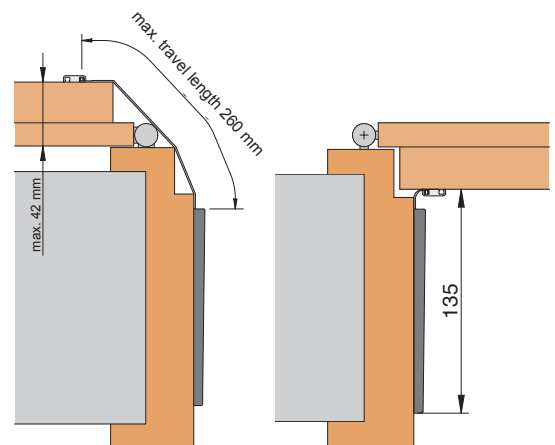
### Profile colour



C-0

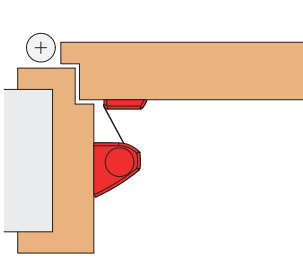
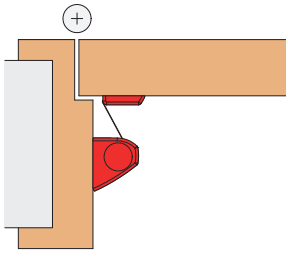
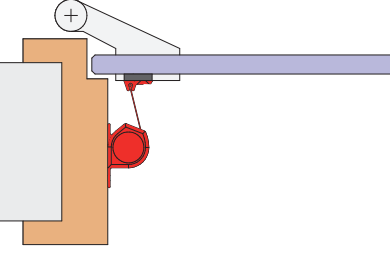
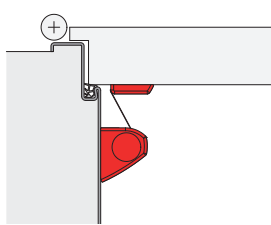
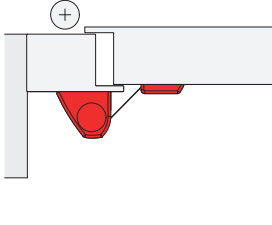
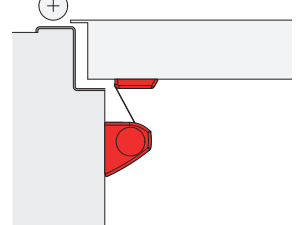
### Technical data

Reduction in Frame clearcawidth	7 mm
Maximum length	2,500 mm
Standard length*	1,943 mm
Minimum length	None
Fixed lengths	Available
Can be shortened by	✓
Standard accessories	5940
Accessories for metal door frames**	5125



\* Length supplied for standard doors in accordance with DIN 18101 with BR2000. For doors with BR2125, we recommend that you order a length of 2,050 mm.

\*\*Optional multi-use drill with Ø 3 mm, art. no. 5127. The right to make technical changes is reserved athmer oHG | Stand 11.07.2018

Frame	Wooden wrap-around frame	Wooden wrap-around frame	Wooden wrap-around frame
Door leaf	Wood, with rebate	Wood, without rebate	All-glass
Door geometry			
Type NR-38	✓	✓	✓
NR-32 UniSafe®	✓	✓	✓
Type NR-30	✓	✓	✓
Type NR-26	-	-	-
Type NR-25	✓	✓	✓
Type NA-7	✓	✓	-
Frame	Steel wrap-around frame	Steel frame	Z frame
Door leaf	Steel, with rebate	Steel, flush fit	Steel
Door geometry			
Type NR-38	✓	✓	✓
NR-32 UniSafe®	✓	✓	✓
Type NR-30	✓	✓	✓
Type NR-26	-	-	-
Type NR-25	✓	✓	✓
Type NA-7	✓	-	✓

For further applications, refer to:  
 Product selector at [www.athmer-fingerschutz.de](http://www.athmer-fingerschutz.de)





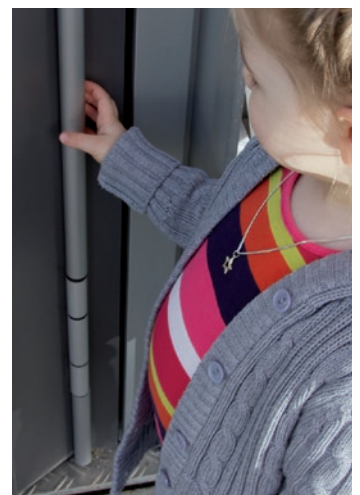
## Product family



## Opening side protective profiles

### for the hinge side of the opening face

- Opening face protective profiles safeguard the gap between the door leaf and the frame reliably on the opening face.
- Suitable for retrofitting
- Maintenance free
- Aluminium profiles anodised or colour coated
- Suitable for outdoor use
- Fixed lengths available
- For all hinge diameters
- Available as a set for installation under, between and above the hinges





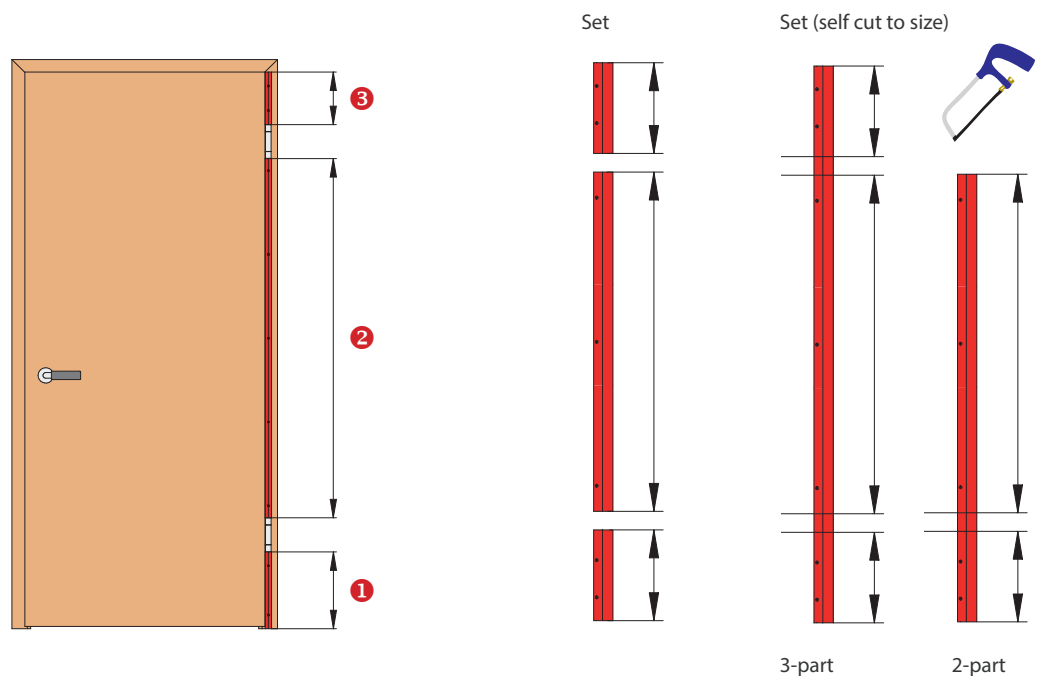


## Sets

- Surface finish: Anodised aluminium or colour coated
- Also available as a set, comprising:
  - Profile 1: below the lower hinge
  - Profile 2: between the hinges
  - Profile 3 (optional): above the upper hinge
- No cutting required on site
- Easy to install

### Sets for self cutting to size

- 2-part for safeguarding between and below the hinges
- 3-part for safeguarding between, above and below the hinges
- For doors from 2.11 m



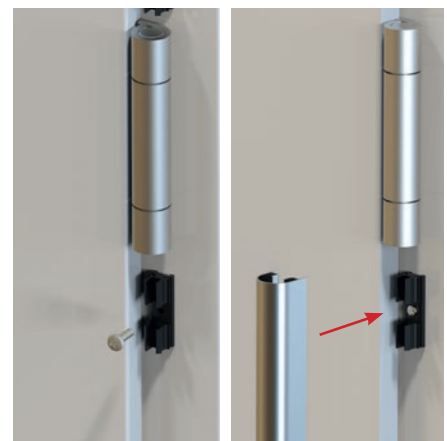
### Technical data for sets

Sets

Fixed lengths for profile ① / ② / ③

## Snap-on fastening for BU-K profiles

- Concealed fastening
- Easy to install
- For rebated doors
- 3 clips per bag of accessories  
Art. no. 5431
- Particularly suitable for metal frames  
with additional accessories



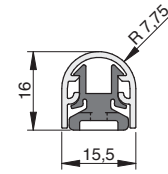
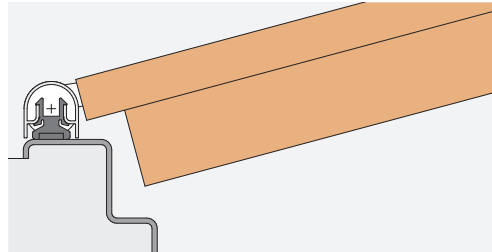


## BU-K

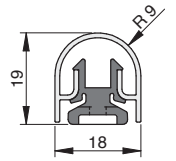
### Protective profiles for rebated doors

- Concealed snap-on fastening
- for wooden and metal frames
- Ø15 - 24mm hinge

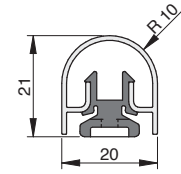
### Application



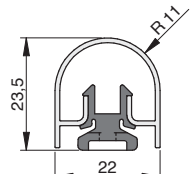
BU-16K



BU-18K



BU-20K

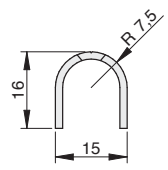
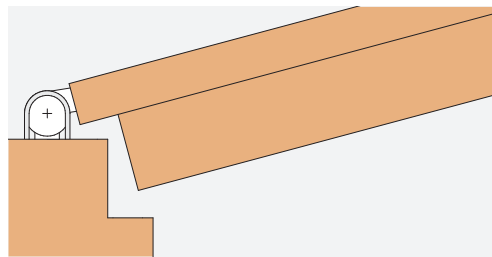


BU-22K

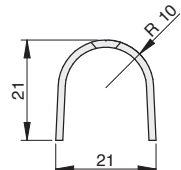
## BU

### Protective profiles for rebated doors

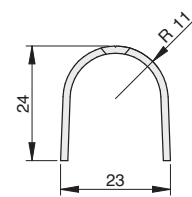
- For wooden frames
- Ø15 - 24mm hinge



BU-16



BU-20

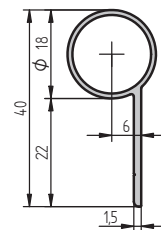
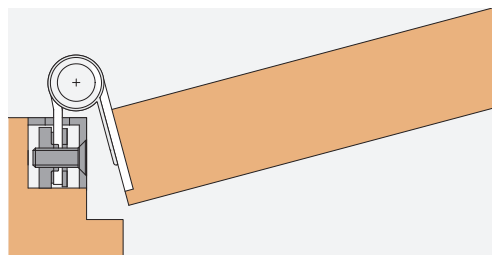


BU-22

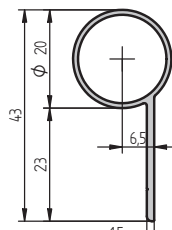
## BD+

### Protective profiles for doors without rebate with hinges for adjustable retainer elements

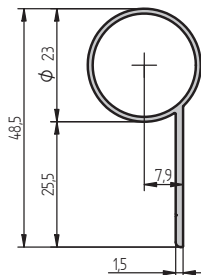
- Ø15 - 24mm hinge



BD+-18



BD+-20

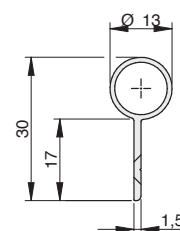
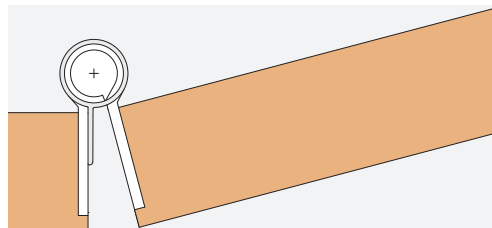


BD+-23

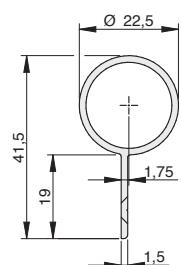
## BO

### Protective profiles for doors without rebate with screw-on flap hinges

- Hinge Ø12 - 14mm, 22 - 24mm



BO-13



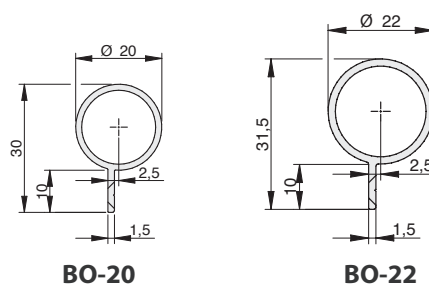
BO-23



## BO

**Protective profiles for doors with flush fit profile Profile doors**

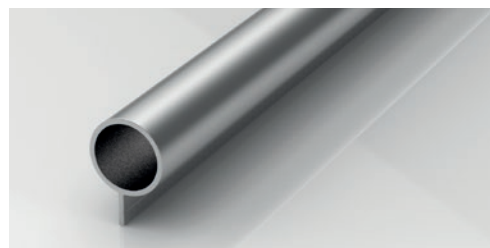
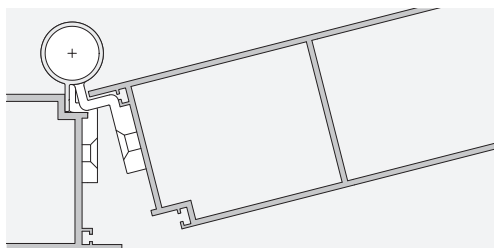
- Ø15 - 23mm hinge



BO-20

BO-22

### Application



## BA-28

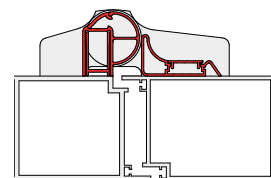
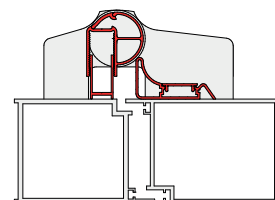
**Protective system BA-28 for surface-mounted universal hinges on metal doors**

- Variable adjustment
- Standard colour: silver anodised C-0; individual colours available
- Concealed screw fixing

#### Technical data:

Suitable for pivotal points from 20-36 mm.

Length supplied: 1,900 mm, can be shortened



## BA-22

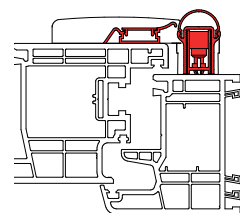
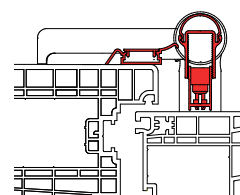
**Protective system BA-22 for surface-mounted universal hinges on plastic doors**

- Variable adjustment
- Standard colour: white RAL 9016; individual colours available
- Concealed screw fixing

#### Technical data:

Suitable for overlap dimensions of 13-28 mm and hinge diameters from 21-26 mm.

Length supplied: 1,900 mm, can be shortened

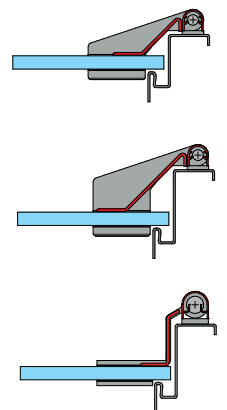
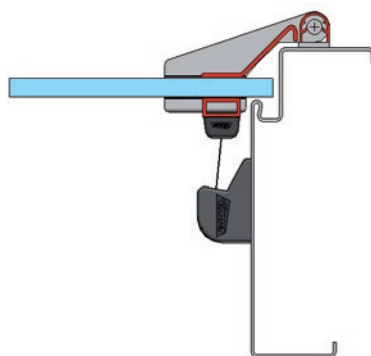


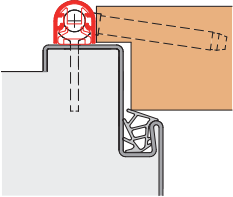
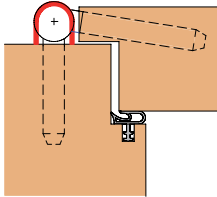
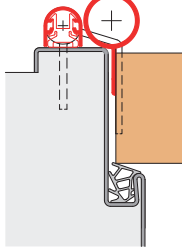
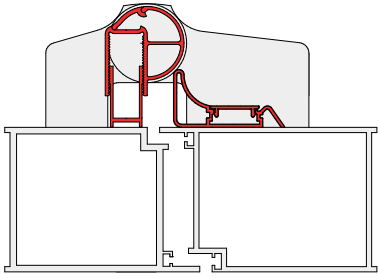
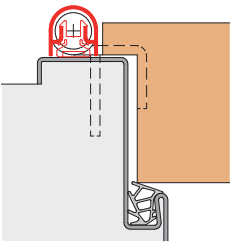
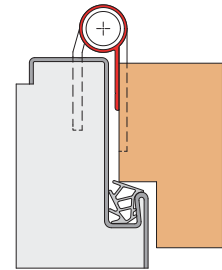
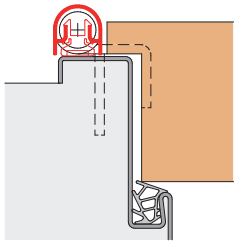
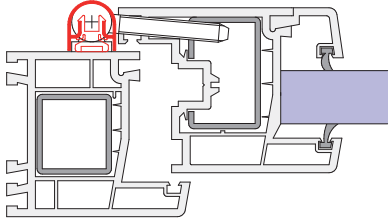
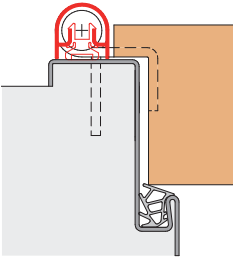
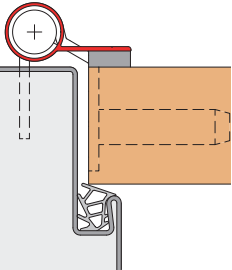
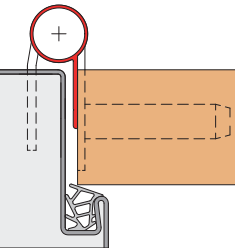
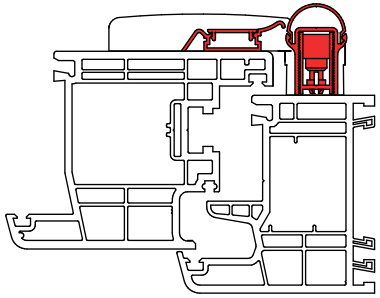
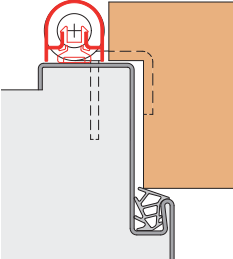
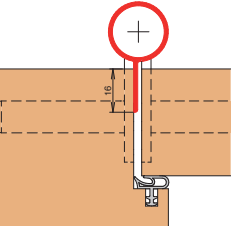
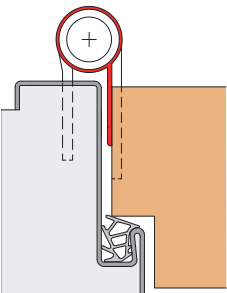
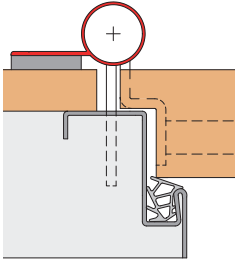
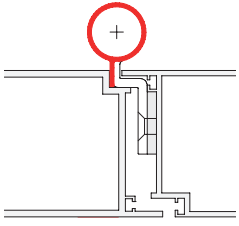


## Athmer Finger Protection System solution

### for retrofitting all-glass doors

- Suitable for all conventional all-glass door hinges
- A combination of Athmer Finger Protection NR-30 or NR-25 and the new protective profile for all-glass doors
- Suitable for wooden or metal frames, and glass side elements
- Colour matched to door fittings
- Fixed lengths available
- Standard colour: C-0 and C-31
- The spacer rail and the protective profile are pre-fitted with special adhesive tape for glass doors



Hinge Ø 15 - 16 mm	BU-16K	BU-16	BU-16K + BO-23	Surface-mounted hinge	BA-28
	 e.g. V 0020	 e.g. V 3420	 e.g. V 0087		
Hinge Ø 18 mm	BU-18K	BD <sup>+</sup> -18	Narrow frame surface	Surface-mounted hinge	BU-18K
	 e.g. VX 7939/160 18-3	 e.g. VX 7729/160 18-3			
Hinge Ø 20 mm	BU-20K	BD <sup>+</sup> -23	BD <sup>+</sup> -20	Surface-mounted hinge	BA-22
	 e.g. VX 7939/100	 e.g. VN 8849/100	 e.g. VX 7729/100		 Hinge diameter 21 - 26 mm
Hinge Ø 22 - 24 mm	BU-22K	BO-23	BD <sup>+</sup> -23	Surface-mounted hinge	BD <sup>+</sup> -23
	 e.g. VX 7939/160	 e.g. VN 2929/160	 e.g. VX 7728/160	 e.g. VX 7859/160	 Hinge diameter 22 mm

**Please note:**

→ Our illustrations show standardised installation situations. Please check your particular installation situation on site.





## HS-25 for main closing edges

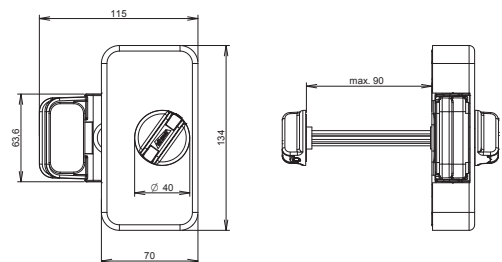
### Door stop with active finger protection



- Prevention of trapping and shearing points
- Prevents accidental closing of doors
- Permanent protective function through automatic activation when door is opened
- Manual unlocking possible for both sides of the door
- Knob optionally replaceable with any knob that matches the door element
- Ideal for use in child daycare centres:
  - High frequented doors
  - Doors with door closer (e.g. in toilets)

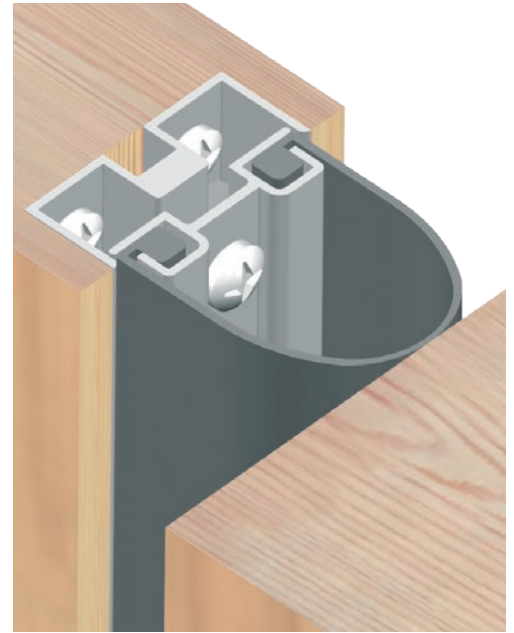
### Technical data:

- For wooden hinged doors
- Suitable for rebated or non-rebated doors
- For DIN right/left doors
- Screw-fixed to the closing surface of the door panel
- Variable installation height - Recommend minimum height of 1.70 m
- Maximum door leaf thickness 90 mm
- Flexible choice of colours

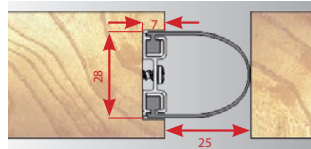


## SwingGUARD

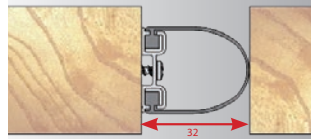
- A for safeguarding and sealing double-swing doors, revolving doors and sliding doors with a track stop or soft-close system
- Concealed fixing
- Quick and easy installation
- Inset or surface-mounted, as required
- Sealing profile made of wear-resistant silicone



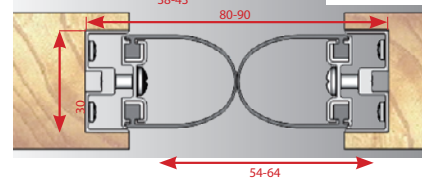
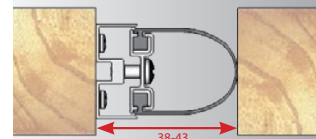
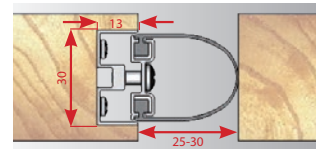
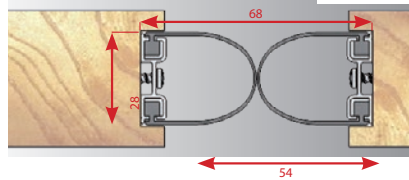
Inset



Surface-mounted

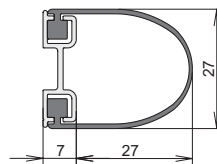


Double-wing, inset

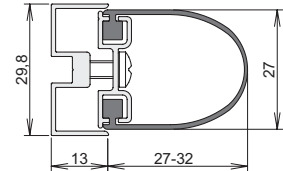


### Cross sections

#### SwingGUARD A



#### SwingGUARD S



### Technical data

Tolerance compensation

-

vertically up to 5 mm

Max. delivery length

On request

On request

Standard length

2,120 mm

2,120 mm

Minimum length

None

None

Fixed lengths

Available

Available

Can be shortened by



Sealing profile

Silicone, RAL 7043

Silicone, RAL 7043

Profile material

Aluminium

Aluminium



Door opening restrictor

for wooden and glass doors



### Advantages



## Porti® family

### For wooden and glass doors

- Prevents hazards and damage caused by doors swinging back
  - Adaptive damping protects the door leaf and frame
  - Uniquely space-saving, design-oriented
  - Easy to install
  - For retrofitting to metal door frames
  - Tripping hazards and unevenness are prevented
  - Ideal for areas with stringent hygienic requirements, and where appearance matters
  - Ideal for use in hotels, offices and doctors' surgeries
  - Excellent for floors with underfloor heating
- No drilling necessary in the floor for door stops

Frame  
Weight of door leaf  
For retrofitting  
Article number

Porti® for wooden doors						Porti® for glass doors	
Hinge width 720 - 1,110 mm			Hinge width 610 - 719 mm			Hinge width 709 - 959 mm	
Metal / wood*	Wood	Metal frame	Metal / wood*	Wood	Metal frame	Wood	Metal frame
30 kg	65 kg	65 kg	30 kg	65 kg	65 kg	50 kg	50 kg
x		x	x		x		x
5312	5489	5371	5313	5465	5379	5487	5318
* Suitable for solid wood door frames only			* Suitable for solid wood door frames only				



## PORTI® for wooden doors

### Technical data

- Maximum door leaf weight up to 65 kg
- Particularly thin lever of only 2 mm
- Restrictor plate 15.8 x 12 mm
- Upper door frame gap 4 - 10 mm
- Endurance tested on the basis of DIN EN 13126-5 meets class 4
- Door opening angle max. 120°
- The choice of hinge should take account of the load exerted by the door opening restrictor

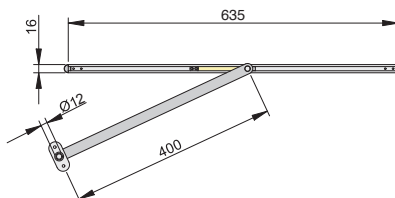


### Application

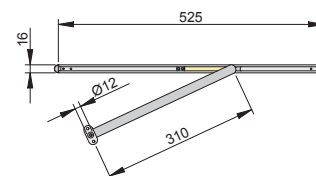
#### Up to 30 kg door leaf weight

- Retrofittable to solid wood and metal door frames
- For door leaf widths of:

720 mm - 1,110 mm, art. no. 5312



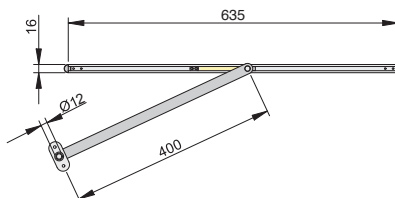
610 mm - 719 mm, art. no. 5313



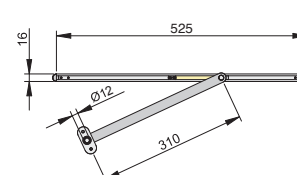
#### Up to 65 kg door leaf weight

- Retrofittable to metal door frames
- For door leaf widths of:

720 mm - 1,110 mm, art. no. 5371

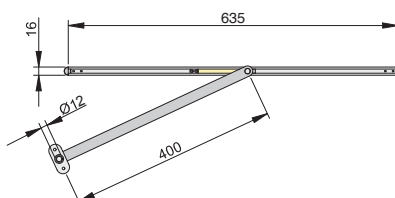


610 mm - 719 mm, art. no. 5379

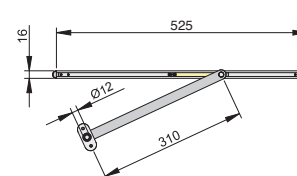


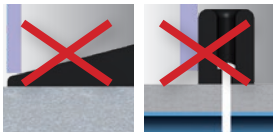
- Set-up possible on wooden frames with a fixing element in the door frame (see next page)
- For door leaf widths of:

720 mm - 1,110 mm, art. no. 5489



610 mm - 719 mm, art. no. 5465





### Technical data

## PORTI® for glass doors

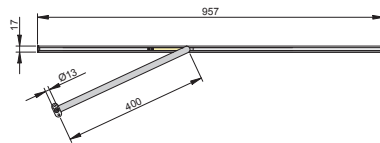
- Maximum door leaf weight up to 50 kg
- Silver-coloured, anodised
- Slide plate bonded to glass door leaf
- Upper door frame gap 4 - 10 mm
- Particularly thin lever of only 2 mm
- Restrictor plate 16.8 x 12.2 mm
- Endurance tested on the basis of DIN EN 13126-5
- Meets class 4
- Door opening angle max. 120°
- The use of sandblasted glass doors is not recommended
- Suitable for doors made of 8 / 10 / 12 mm ESG and also for LSG made from ESG
- 10 mm ESG recommended with Office hinges and adjustable hinge retainer



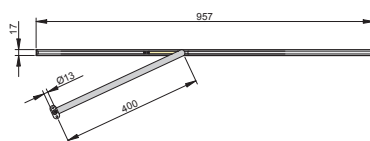
### Application

#### Up to 50 kg door leaf weight

- Retrofittable to metal door frames
- For door leaf widths of:  
709 mm - 959 mm, art. no. 5318



- Set-up possible on wooden frames with **fixing element**
- For door leaf widths of:  
709 mm - 959 mm, art. no. 5487



**J C S**

JULIUS CRONENBERG SOPHIENHAMMER  
OFFENE HANDELSGESELLSCHAFT SEIT 1711



**Athmer oHG**

**Sophienhammer  
59757 Arnsberg-Müschede**

**Tel. +49 2932 477-500**

**Fax +49 2932 477-100**

**info@athmer.de  
www.athmer.de**